



LEENDERS

SINCE 1979

FUGA eL MkII

INSTALLATION EN

Check interior

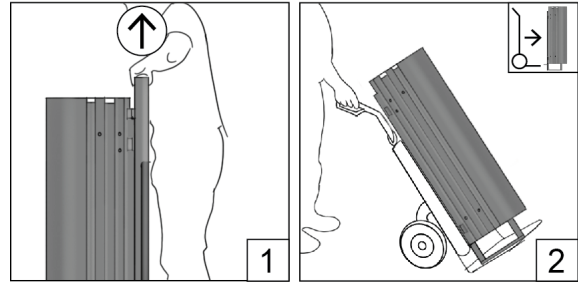
Parts in the interior and combustion chamber can shift during transport. Check the heat shield and all other interior ceramics to make sure everything is in the right place.



Points of attention installation Fuga eL MkII

Transport

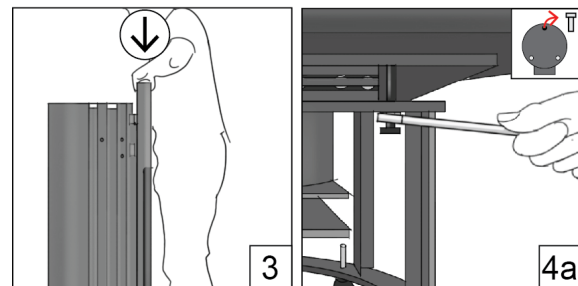
Open the door and lift it out of its hinges (see 1). Position protection between the hand truck and the stove. Put the stove on the hand truck with the FRONT towards the hand truck (see 2.).



Transit bolts

Rehang the door by slotting it back into the hinges (see 3).

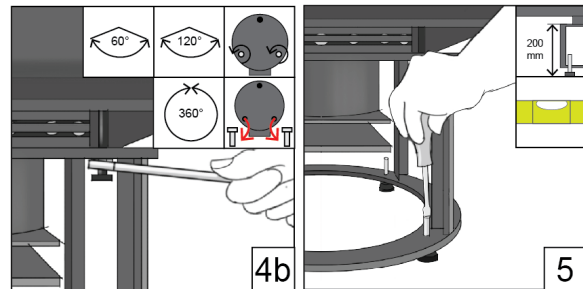
Remove the REAR transit bolt (open ended spanner SW 13). See 4a.



Adjusting

Loosen the front two bolts slightly (open ended spanner SW 13) for rotation of 60° (rear flue) or 120° (top flue). Remove the two front bolts through rotating them 360° (only for top flue). See 4b.

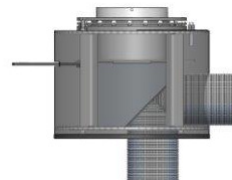
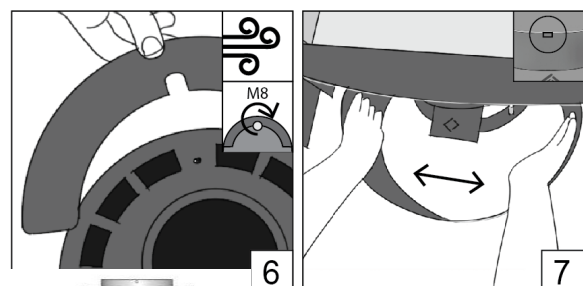
Adjust the stove until it is level about 200mm from the floor (see 5).



Ventilation

Ventilation: fit the cover plate with the M8 bolt provided (open ended spanner SW 13). See 6.

Position the protective cover underneath; be aware of the central notch (see 7).





General instructions and regulations

Installation

To secure the warranty, the Fuga eL MkII must be installed by a properly qualified person employed by a dealer recognized by Leenders. See leenders.nl for a current list of addresses of recognized dealers or contact the manufacturer.

The stove is susceptible to scratching. Handle with care.
After installation, check the draught by burning some kindling wood.

Use

- All local regulations including those referring to national and European standards must be observed when installing the appliance.
- Ensure there is sufficient ventilation/air supply in the room where the stove is installed. Air extractors such as a cooker hood may cause problems due to flue gases escaping from the stove into the room.
- The stove is suitable and prepared for connection to a fresh air supply.
- The stove is suitable for use with a chimney ventilator.
- The appliance is not suitable for a shared flue system.
- The appliance must be installed on a floor having sufficient bearing capacity.
- Ensure adequate access for cleaning the appliance, the flue-gas connection and the chimney.

Safety instructions

- Glass is quite susceptible to breaking and broken glass is quite sharp. Take appropriate measures.
- For general safety, we refer to the VCA guidelines.
- Note: After installation, ensure there is no inflammable and/or explosion-hazardous material in or on the stove such as a spray can, packing material and the like.

Distance to combustible materials

- Back; 10 cm
- Side; 10 cm
- Front; 80 cm

Specifications Fuga eL MkII

- Nominal power = 9.9 kWh
- Heat output capacity = 9.9 kWh
- Flue gas mass flow = 11,3 g/s
- Appliance weight = 180 kg
- Minimum chimney draught = 0.123 mbar
- Flue gas temperature directly over the stove = 239 °C
- Energy Efficiency 80,1%, class A+, index 107,1

**A+**